

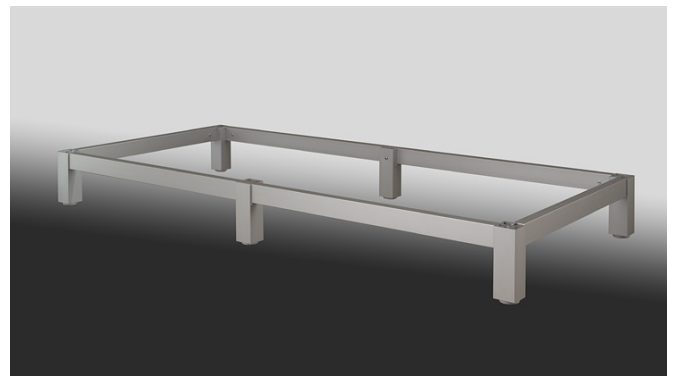
Furniture base frame



silver coloured anodized aluminium
legprofile 40x40 mm with adjustable gliders

transverse profile 40x20 mm with easy to assemble
plug-in fitting

position of the leg in the center is variable
The leg in the center can not scratch the longitudinal profiles,
because of a separate plastic insert



Order information

width and depth

please specify the basic dimensions (W + D) of the kitchenette or cabinet. The system is manufactured – 4 mm in width and depth, i.e. 2 mm return is provided per side.

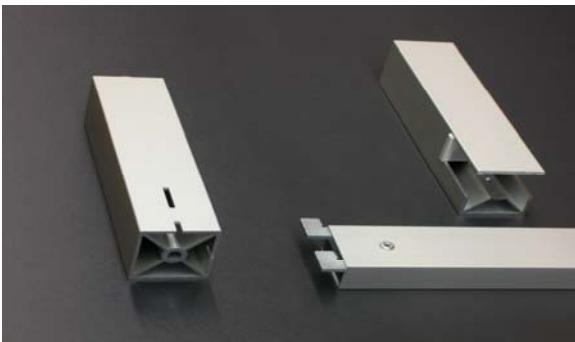
center feet:

1 pair of centre feet of required height are needed per running metre. The extra charge for the profile is calculated according to centre feet.

2 support frames positioned behind each other are used for kitchen island units deeper than 700 mm.

corner feet

centre feet



implementation:	height setting 14 mm
material:	aluminium
surface:	silver coloured anodized
installation:	plug fit, frame can be screwed directly to the cabinet
width:	frame: max 3900 mm
height:	80 mm, 100 mm, 150 mm, 200 mm

shipment:

2 longitudinal profile, 2 depth profile, 4 corner feet,
instructions